

Treatment Naïve

Elbasvir + Grazoprevir +/- Ribavirin in Treatment-Naïve HCV GT 2, 4, 5, or 6

C-SCAPE

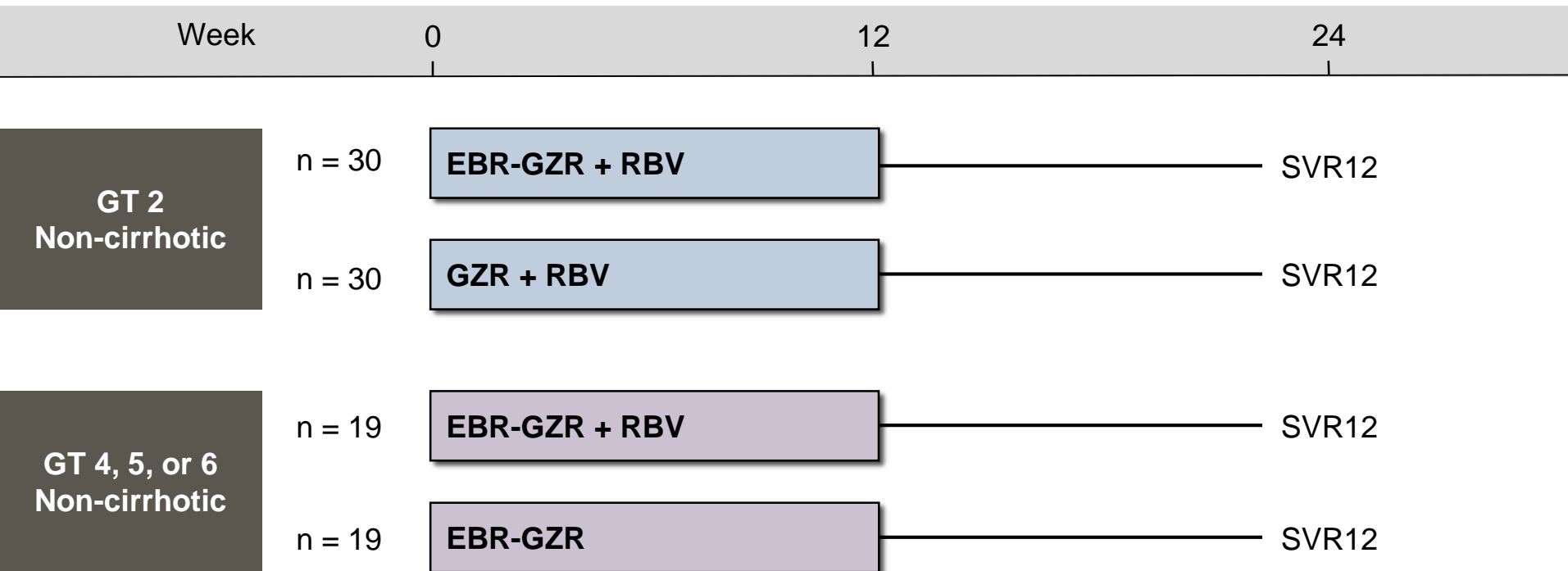
Brown A, et al. EASL 2015; Abstract P0771.

Elbasvir + Grazoprevir +/- RBV in Treatment-Naïve GT 2, 4, 5 or 6 C-SCAPE Study: Features

C-SWIFT Trial

- **Design:** Open-label, phase 2 trial to evaluate the efficacy and safety of elbasvir + grazoprevir + ribavirin versus elbasvir + grazoprevir versus grazoprevir + ribavirin in non-cirrhotic, treatment-naïve patients with GT 2, 4, 5, or 6 chronic hepatitis C infection
- **Entry Criteria**
 - Chronic HCV GT2 (n=60), GT4 (n=20), GT5 (n=8), or GT6 (n=10)
 - 18 years or older
 - No prior HCV treatment
 - HCV RNA $\geq 10,000$ IU/ml
 - No evidence of cirrhosis
- **Primary End-Point:** SVR12

Elbasvir + Grazoprevir +/- RBV in Treatment-Naïve GT 2, 4, 5 or 6 C-SCAPE Study: Study Design for GT 1



Abbreviations: EBR = Elbasvir; GZR = Grazoprevir; RBV = ribavirin

Drug Dosing

Elbasvir (50 mg) once daily

Grazoprevir (100 mg) once daily

Ribavirin (weight-based and divided bid): 800 to 1400 mg/day

Elbasvir + Grazoprevir +/- RBV in Treatment-Naïve GT 2, 4, 5 or 6 C-SCAPE Study: Baseline Characteristics

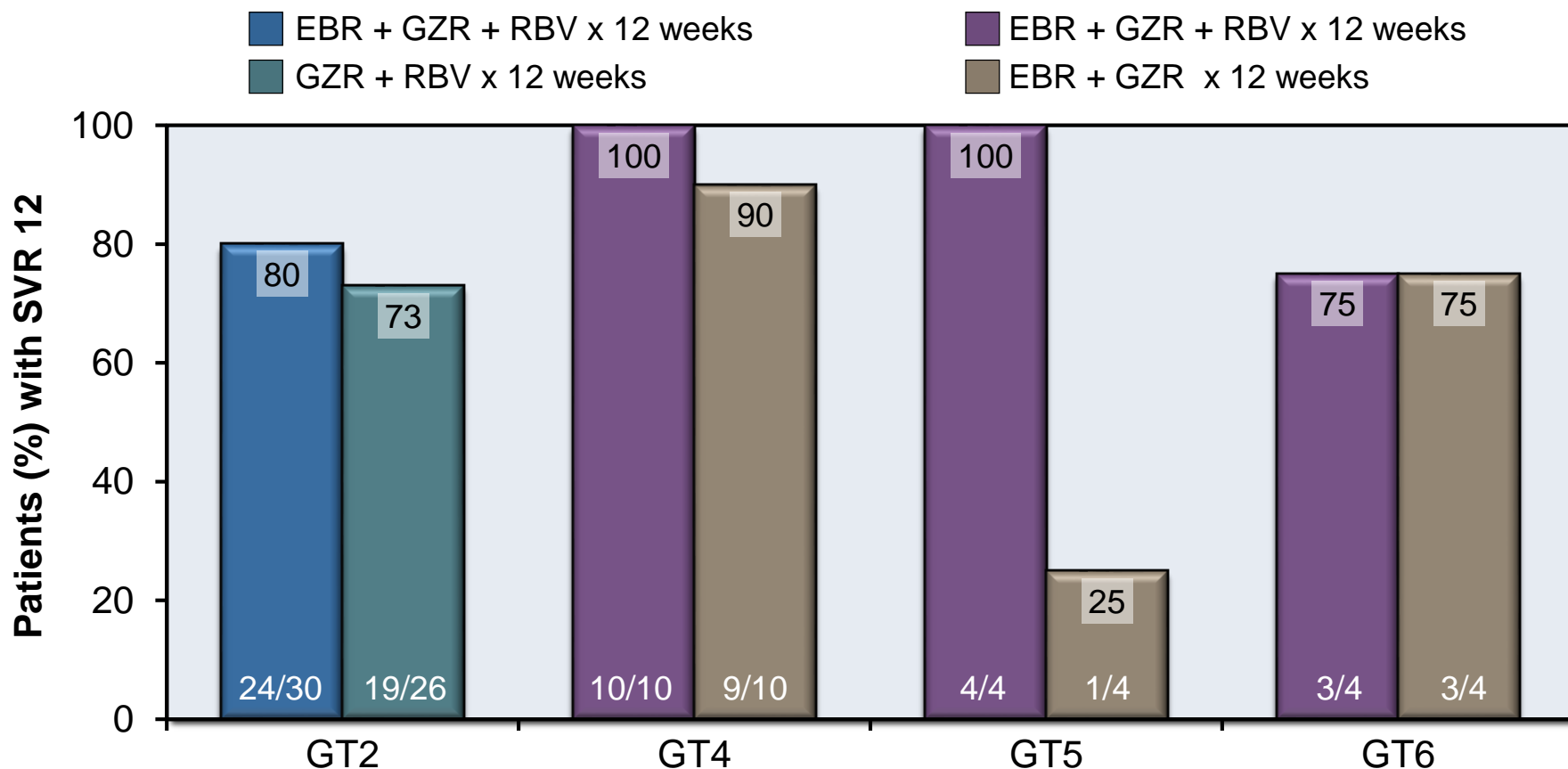
Baseline Characteristic	Genotype 2		Genotype 4, 5, 6	
	EBR + GZR+ RBV n=30	GZR + RBV n=30	EBR + GZR + RBV n=19	EBR-GZR n=19
Mean age, y (range)	47.3	48.3	52.2	52.8
Male sex, %	63.3	56.7	42.1	63.2
Race, %				
White	100	86.7	73.7	68.4
Other	0	13.3	26.3	31.6
HCV Genotype, n				
2	30	26	0	0
4	0	0	10	10
5	0	0	4	4
6	0	0	4	4
1	--	4	--	--
HCV RNA				
≤ 2 million	36.7	36.7	57.9	36.8
>2 million	63.3	63.3	42.1	63.2

*Excluded from modified intent-to-treat analysis due to discordant genotype

Elbasvir + Grazoprevir +/- RBV in Treatment-Naïve GT 2, 4, 5 or 6

C-SCAPE Study: Results

C-SCAPE: SVR12 by Genotype and Regimen



Elbasvir + Grazoprevir +/- RBV in Treatment-Naïve GT 2, 4, 5 or 6 C-SCAPE Study: Conclusions

Conclusions: “These data support the inclusion of patients with HCV GT4 and GT6 infection in the phase 3 program.”